

## 2019 Space Survey – Summary Report by Division

Facilities Planning & Capital Projects  
 Space Management  
 Contact: Jeffrey Dumars, X6-6588

Census Date 10/31/2019

Division 125000 - Administration and Finance  
Division Admin Cindy Villa, Senior VP/CFO AFD

### Summary of Division Space

Total Number of Buildings 53  
 Total Number of Rooms 561  
 Total Assignable Square Footage (ASF) 321,224

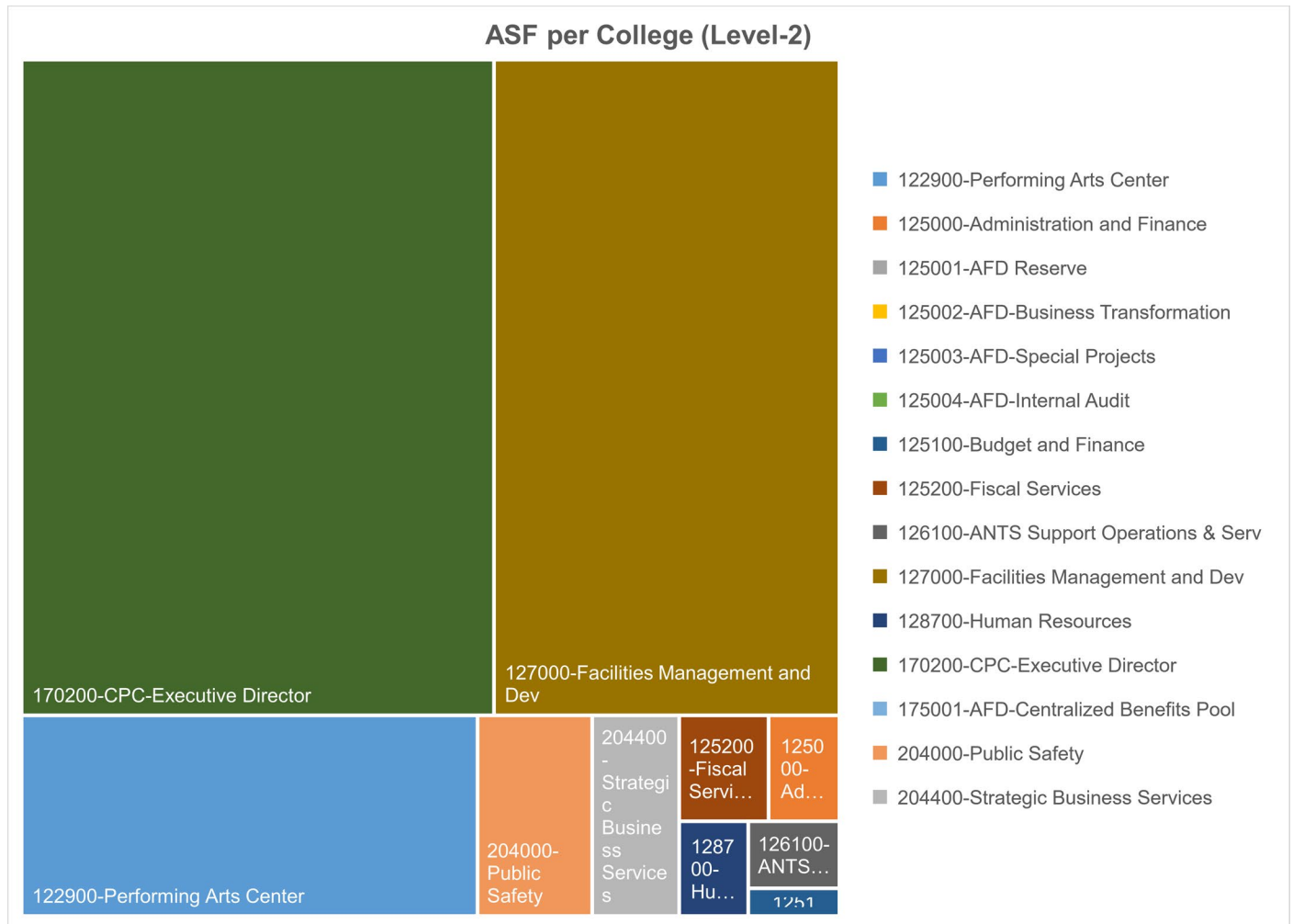


Chart 1: ASF per Department & Room Type

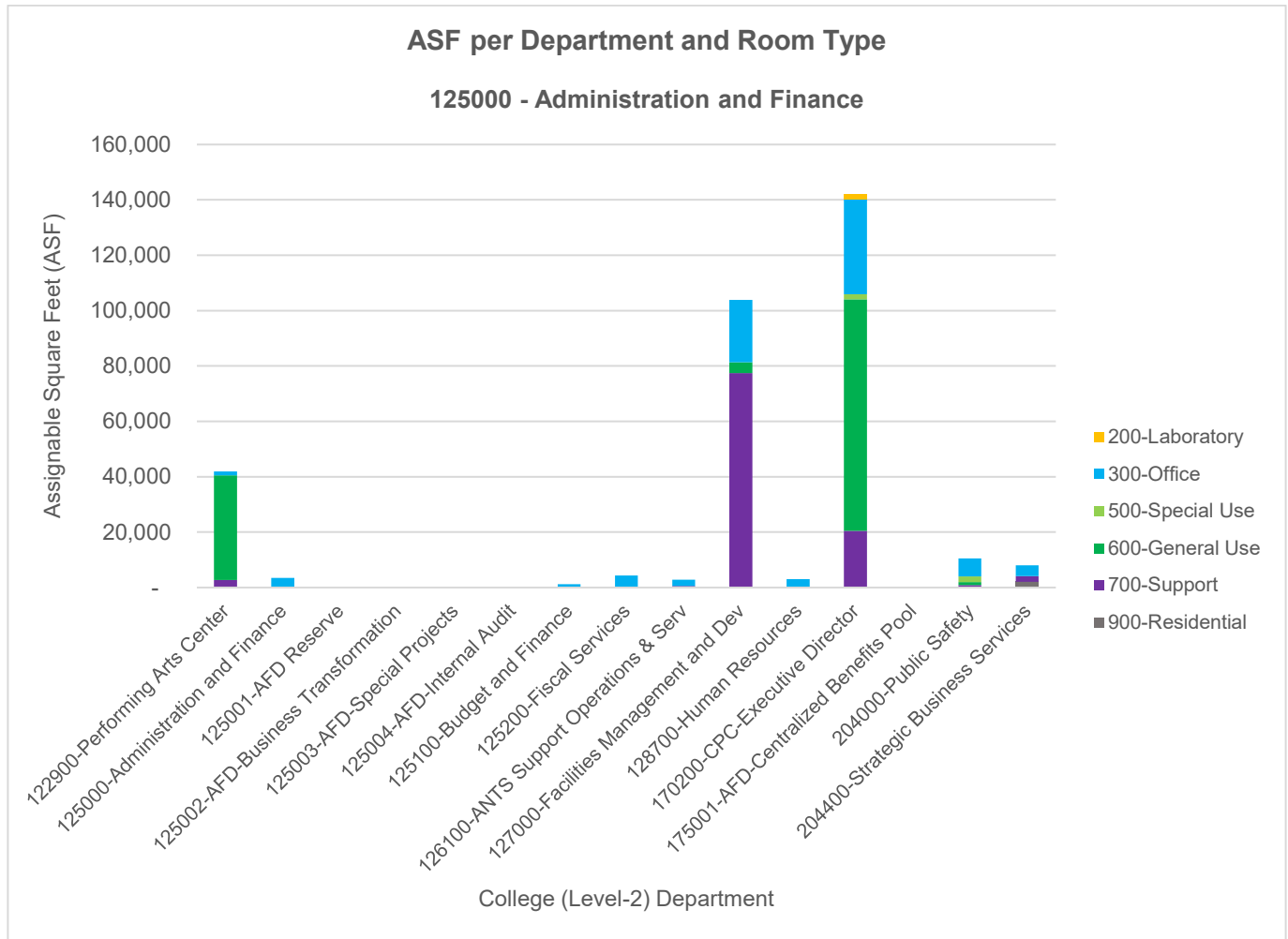


Table 1: ASF per Department & Room Type

College (Level-2)	200-Laboratory		300-Office		500-Special Use		600-General Use		700-Support		900-Residential		TOTAL	TOTAL
	ASF	# of Rooms	ASF	# of Rooms	ASF	# of Rooms	ASF	# of Rooms	ASF	# of Rooms	ASF	# of Rooms	ASF	# of Rooms
122900-Performing Arts Center	-	-	1,441	7	-	-	37,797	35	2,722	14	-	-	41,960	56
125000-Administration and Finance	-	-	3,445	16	-	-	-	-	-	-	-	-	3,445	16
125001-AFD Reserve	-	-	-	-	-	-	-	-	-	-	-	-	-	-
125002-AFD-Business Transformation	-	-	-	-	-	-	-	-	-	-	-	-	-	-
125003-AFD-Special Projects	-	-	-	-	-	-	-	-	-	-	-	-	-	-
125004-AFD-Internal Audit	-	-	-	-	-	-	-	-	-	-	-	-	-	-
125100-Budget and Finance	-	-	1,156	6	-	-	-	-	-	-	-	-	1,156	6
125200-Fiscal Services	-	-	4,336	14	-	-	-	-	-	-	-	-	4,336	14
126100-ANTS Support Operations & Serv	-	-	2,214	9	-	-	-	-	579	3	-	-	2,793	12
127000-Facilities Management and Dev	-	-	22,454	111	-	-	3,916	6	77,457	86	-	-	103,827	203
128700-Human Resources	-	-	2,786	11	220	1	-	-	-	-	-	-	3,006	12
170200-CPC-Executive Director	1,972	2	34,238	81	1,851	7	83,606	80	20,469	14	-	-	142,136	184
175001-AFD-Centralized Benefits Pool	-	-	-	-	-	-	-	-	-	-	-	-	-	-
204000-Public Safety	-	-	6,582	26	2,004	3	1,109	5	860	3	-	-	10,555	37
204400-Strategic Business Services	-	-	3,937	17	-	-	-	-	2,024	2	2,049	2	8,010	21
<b>TOTAL</b>	<b>1,972</b>	<b>2</b>	<b>82,589</b>	<b>298</b>	<b>4,075</b>	<b>11</b>	<b>126,428</b>	<b>126</b>	<b>104,111</b>	<b>122</b>	<b>2,049</b>	<b>2</b>	<b>321,224</b>	<b>561</b>

Chart 2: ASF per Building & Department

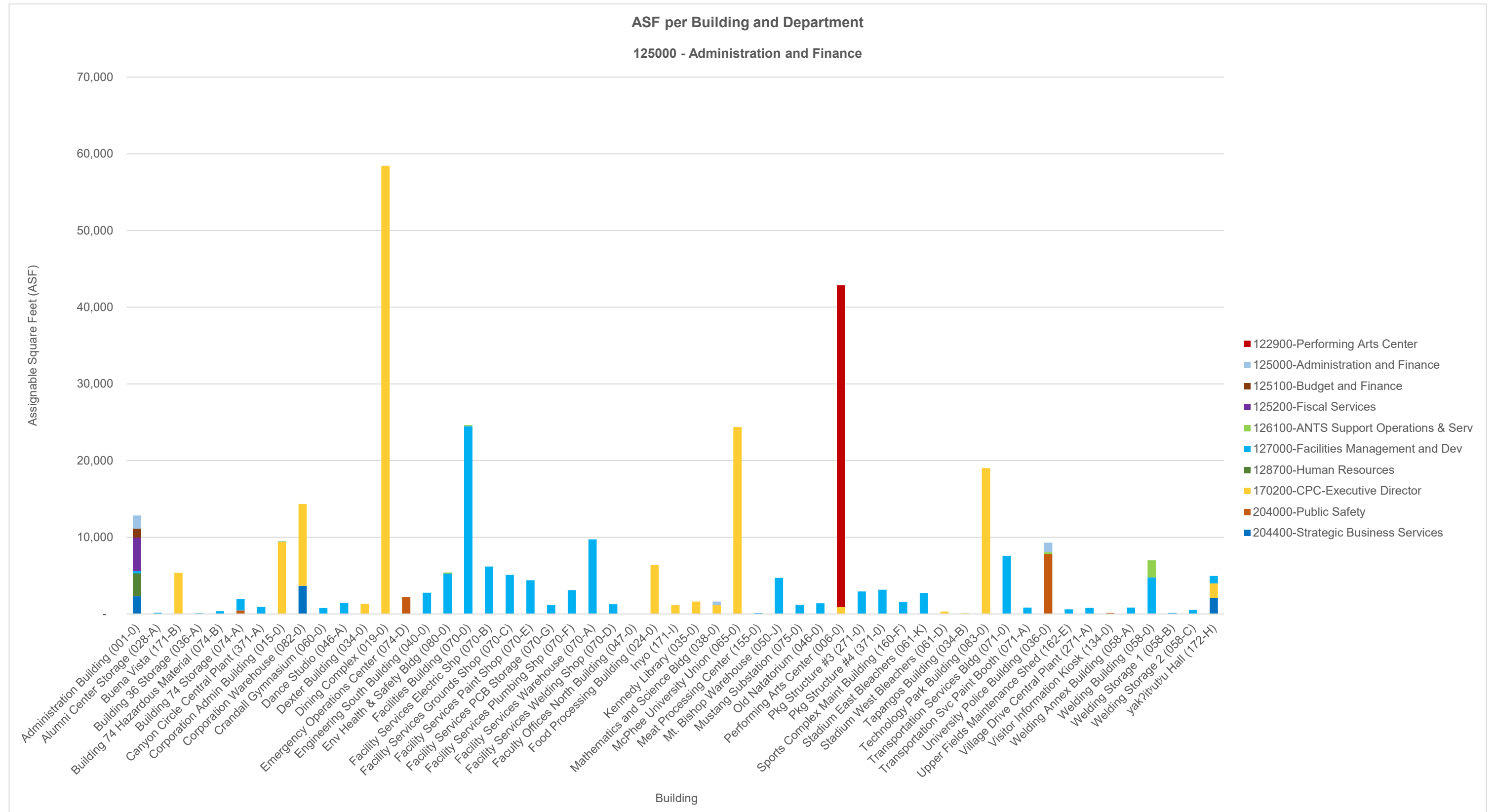


Table 2: ASF per Building & Department

Building	122900-Performing Arts Center		125000-Administration and Finance		125100-Budget and Finance		125200-Fiscal Services		126100-ANTS Support Operations & Serv		127000-Facilities Management and Dev		128700-Human Resources		170200-CPC-Executive Director		204000-Public Safety		204400-Strategic Business Services		TOTAL	TOTAL	
	ASF	# of Rooms	ASF	# of Rooms	ASF	# of Rooms	ASF	# of Rooms	ASF	# of Rooms	ASF	# of Rooms	ASF	# of Rooms	ASF	# of Rooms	ASF	# of Rooms	ASF	# of Rooms	ASF	# of Rooms	
Administration Building (001-0)	-	-	1,731	9	1,156	6	4,336	14	-	-	330	2	3,006	12	-	-	-	-	2,283	14	12,842	57	
Alumni Center Storage (028-A)	-	-	-	-	-	-	-	-	-	-	158	2	-	-	-	-	-	-	-	-	-	158	2
Buena Vista (171-B)	-	-	-	-	-	-	-	-	-	-	-	-	-	-	5,367	9	-	-	-	-	-	5,367	9
Building 36 Storage (036-A)	-	-	-	-	-	-	-	-	-	-	98	1	-	-	-	-	-	-	-	-	-	98	1
Building 74 Hazardous Material (074-B)	-	-	-	-	-	-	-	-	-	-	348	1	-	-	-	-	-	-	-	-	-	348	1
Building 74 Storage (074-A)	-	-	-	-	-	-	-	-	-	-	1,452	2	-	-	-	-	462	1	-	-	-	1,914	3
Canyon Circle Central Plant (371-A)	-	-	-	-	-	-	-	-	-	-	910	2	-	-	-	-	-	-	-	-	-	910	2
Corporation Admin Building (015-0)	-	-	-	-	-	-	-	-	-	-	32	1	-	-	9,443	30	-	-	-	-	-	9,475	31
Corporation Warehouse (082-0)	-	-	-	-	-	-	-	-	-	-	-	-	-	-	10,670	3	-	-	3,678	5	14,348	8	
Crandall Gymnasium (060-0)	-	-	-	-	-	-	-	-	-	-	761	1	-	-	-	-	-	-	-	-	-	761	1
Dance Studio (046-A)	-	-	-	-	-	-	-	-	-	-	1,457	2	-	-	-	-	-	-	-	-	-	1,457	2
Dexter Building (034-0)	-	-	-	-	-	-	-	-	-	-	-	-	-	-	1,326	1	-	-	-	-	-	1,326	1
Dining Complex (019-0)	-	-	-	-	-	-	-	-	-	-	-	-	-	-	58,433	76	-	-	-	-	-	58,433	76
Emergency Operations Center (074-D)	-	-	-	-	-	-	-	-	-	-	-	-	-	-	-	-	2,187	3	-	-	-	2,187	3
Engineering South Building (040-0)	-	-	-	-	-	-	-	-	-	-	2,765	6	-	-	-	-	-	-	-	-	-	2,765	6
Env Health & Safety Bldg (080-0)	-	-	-	-	-	-	-	-	150	1	5,254	13	-	-	-	-	-	-	-	-	-	5,404	14
Facilities Building (070-0)	-	-	-	-	-	-	-	-	140	1	24,480	77	-	-	-	-	-	-	-	-	-	24,620	78
Facility Services Electric Shp (070-B)	-	-	-	-	-	-	-	-	-	-	6,176	9	-	-	-	-	-	-	-	-	-	6,176	9
Facility Services Grounds Shop (070-C)	-	-	-	-	-	-	-	-	-	-	5,085	5	-	-	-	-	-	-	-	-	-	5,085	5
Facility Services Paint Shop (070-E)	-	-	-	-	-	-	-	-	-	-	4,386	6	-	-	-	-	-	-	-	-	-	4,386	6
Facility Services PCB Storage (070-G)	-	-	-	-	-	-	-	-	-	-	1,151	1	-	-	-	-	-	-	-	-	-	1,151	1
Facility Services Plumbing Shp (070-F)	-	-	-	-	-	-	-	-	-	-	3,103	7	-	-	-	-	-	-	-	-	-	3,103	7
Facility Services Warehouse (070-A)	-	-	-	-	-	-	-	-	-	-	9,738	7	-	-	-	-	-	-	-	-	-	9,738	7
Facility Services Welding Shop (070-D)	-	-	-	-	-	-	-	-	-	-	1,258	3	-	-	-	-	-	-	-	-	-	1,258	3
Faculty Offices North Building (047-0)	-	-	-	-	-	-	-	-	-	-	51	1	-	-	-	-	-	-	-	-	-	51	1
Food Processing Building (024-0)	-	-	-	-	-	-	-	-	-	-	-	-	-	-	6,364	11	-	-	-	-	-	6,364	11
Inyo (171-I)	-	-	-	-	-	-	-	-	-	-	-	-	-	-	1,146	1	-	-	-	-	-	1,146	1
Kennedy Library (035-0)	-	-	-	-	-	-	-	-	-	-	-	-	-	-	1,607	3	-	-	-	-	-	1,607	3
Mathematics and Science Bldg (038-0)	-	-	481	3	-	-	-	-	-	-	-	-	-	-	1,140	6	-	-	-	-	-	1,621	9
McPhee University Union (065-0)	-	-	-	-	-	-	-	-	-	-	-	-	-	-	24,368	25	-	-	-	-	-	24,368	25
Meat Processing Center (155-0)	-	-	-	-	-	-	-	-	-	-	119	2	-	-	-	-	-	-	-	-	-	119	2
Mt. Bishop Warehouse (050-J)	-	-	-	-	-	-	-	-	-	-	4,694	9	-	-	-	-	-	-	-	-	-	4,694	9
Mustang Substation (075-0)	-	-	-	-	-	-	-	-	-	-	1,211	1	-	-	-	-	-	-	-	-	-	1,211	1
Old Natatorium (046-0)	-	-	-	-	-	-	-	-	-	-	1,395	1	-	-	-	-	-	-	-	-	-	1,395	1
Performing Arts Center (006-0)	41,960	56	-	-	-	-	-	-	-	-	-	-	-	-	915	2	-	-	-	-	-	42,875	58
Pkg Structure #3 (271-0)	-	-	-	-	-	-	-	-	-	-	2,923	1	-	-	-	-	-	-	-	-	-	2,923	1
Pkg Structure #4 (371-0)	-	-	-	-	-	-	-	-	-	-	3,156	1	-	-	-	-	-	-	-	-	-	3,156	1
Sports Complex Maint Building (160-F)	-	-	-	-	-	-	-	-	-	-	1,553	1	-	-	-	-	-	-	-	-	-	1,553	1
Stadium East Bleachers (061-K)	-	-	-	-	-	-	-	-	-	-	2,717	3	-	-	-	-	-	-	-	-	-	2,717	3
Stadium West Bleachers (061-D)	-	-	-	-	-	-	-	-	-	-	-	-	-	-	310	1	-	-	-	-	-	310	1
Tapangos Building (034-B)	-	-	-	-	-	-	-	-	-	-	-	-	-	-	95	1	-	-	-	-	-	95	1
Technology Park Building (083-0)	-	-	-	-	-	-	-	-	-	-	-	-	-	-	19,020	14	-	-	-	-	-	19,020	14
Transportation Services Bldg (071-0)	-	-	-	-	-	-	-	-	-	-	7,584	12	-	-	-	-	-	-	-	-	-	7,584	12
Transportation Svc Paint Booth (071-A)	-	-	-	-	-	-	-	-	-	-	840	1	-	-	-	-	-	-	-	-	-	840	1
University Police Building (036-0)	-	-	1,233	4	-	-	-	-	289	1	-	-	-	-	-	-	7,771	32	-	-	-	9,293	37
Upper Fields Maintenance Shed (162-E)	-	-	-	-	-	-	-	-	-	-	599	1	-	-	-	-	-	-	-	-	-	599	1
Village Drive Central Plant (271-A)	-	-	-	-	-	-	-	-	-	-	796	1	-	-	-	-	-	-	-	-	-	796	1
Visitor Information Kiosk (134-0)	-	-	-	-	-	-	-	-	-	-	-	-	-	-	-	-	135	1	-	-	-	135	1
Welding Annex Building (058-A)	-	-	-	-	-	-	-	-	-	-	839	1	-	-	-	-	-	-	-	-	-	839	1
Welding Building (058-0)	-	-	-	-	-	-	-	-	2,214	9	4,774	14	-	-	-	-	-	-	-	-	-	6,988	23
Welding Storage 1 (058-B)	-	-	-	-	-	-	-	-	-	-	132	1	-	-	-	-	-	-	-	-	-	132	1
Welding Storage 2 (058-C)	-	-	-	-	-	-	-	-	-	-	530	2	-	-	-	-	-	-	-	-	-	530	2
yak?itutu Hall (172-H)	-	-	-	-	-	-	-	-	-	-	972	2	-	-	1,932	1	-	-	2,049	2	-	4,953	5
<b>TOTAL</b>	<b>41,960</b>	<b>56</b>	<b>3,445</b>	<b>16</b>	<b>1,156</b>	<b>6</b>	<b>4,336</b>	<b>14</b>	<b>2,793</b>	<b>12</b>	<b>103,827</b>	<b>203</b>	<b>3,006</b>	<b>12</b>	<b>142,136</b>	<b>184</b>	<b>10,555</b>	<b>37</b>	<b>8,010</b>	<b>21</b>	<b>321,224</b>	<b>561</b>	

Chart 3: ASF per Building & Room Type

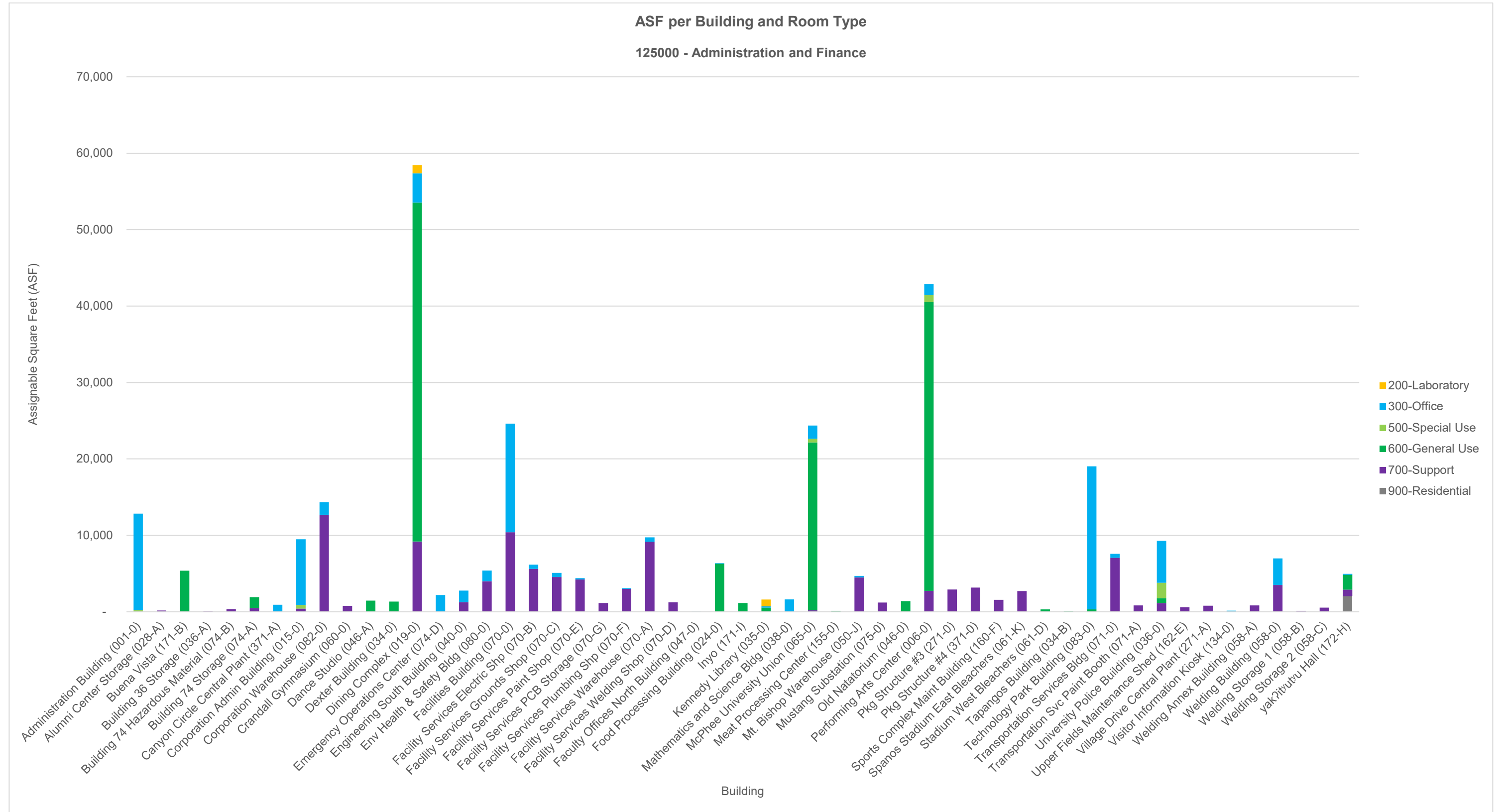


Table 3: ASF per Building & Room Type

Building	200-Laboratory		300-Office		500-Special Use		600-General Use		700-Support		900-Residential		TOTAL	TOTAL
	ASF	# of Rooms	ASF	# of Rooms	ASF	# of Rooms	ASF	# of Rooms	ASF	# of Rooms	ASF	# of Rooms	ASF	# of Rooms
Administration Building (001-0)	-	-	12,622	56	220	1	-	-	-	-	-	-	12,842	57
Alumni Center Storage (028-A)	-	-	-	-	-	-	-	-	158	2	-	-	158	2
Buena Vista (171-B)	-	-	-	-	-	-	5,367	9	-	-	-	-	5,367	9
Building 36 Storage (036-A)	-	-	-	-	-	-	-	-	98	1	-	-	98	1
Building 74 Hazardous Material (074-B)	-	-	-	-	-	-	-	-	348	1	-	-	348	1
Building 74 Storage (074-A)	-	-	-	-	-	-	1,407	2	507	1	-	-	1,914	3
Canyon Circle Central Plant (371-A)	-	-	910	2	-	-	-	-	-	-	-	-	910	2
Corporation Admin Building (015-0)	-	-	8,588	26	463	3	-	-	424	2	-	-	9,475	31
Corporation Warehouse (082-0)	-	-	1,654	3	-	-	-	-	12,694	5	-	-	14,348	8
Crandall Gymnasium (060-0)	-	-	-	-	-	-	-	-	761	1	-	-	761	1
Dance Studio (046-A)	-	-	-	-	-	-	1,457	2	-	-	-	-	1,457	2
Dexter Building (034-0)	-	-	-	-	-	-	1,326	1	-	-	-	-	1,326	1
Dining Complex (019-0)	1,062	1	3,827	22	-	-	44,347	45	9,197	8	-	-	58,433	76
Emergency Operations Center (074-D)	-	-	2,187	3	-	-	-	-	-	-	-	-	2,187	3
Engineering South Building (040-0)	-	-	1,500	4	-	-	-	-	1,265	2	-	-	2,765	6
Env Health & Safety Bldg (080-0)	-	-	1,409	9	-	-	-	-	3,995	5	-	-	5,404	14
Facilities Building (070-0)	-	-	14,225	70	-	-	-	-	10,395	8	-	-	24,620	78
Facility Services Electric Shp (070-B)	-	-	567	3	-	-	-	-	5,609	6	-	-	6,176	9
Facility Services Grounds Shop (070-C)	-	-	533	2	-	-	-	-	4,552	3	-	-	5,085	5
Facility Services Paint Shop (070-E)	-	-	148	1	-	-	-	-	4,238	5	-	-	4,386	6
Facility Services PCB Storage (070-G)	-	-	-	-	-	-	-	-	1,151	1	-	-	1,151	1
Facility Services Plumbing Shp (070-F)	-	-	106	1	-	-	-	-	2,997	6	-	-	3,103	7
Facility Services Warehouse (070-A)	-	-	568	3	-	-	-	-	9,170	4	-	-	9,738	7
Facility Services Welding Shop (070-D)	-	-	-	-	-	-	-	-	1,258	3	-	-	1,258	3
Faculty Offices North Building (047-0)	-	-	51	1	-	-	-	-	-	-	-	-	51	1
Food Processing Building (024-0)	-	-	70	2	-	-	6,294	9	-	-	-	-	6,364	11
Inyo (171-I)	-	-	-	-	-	-	1,146	1	-	-	-	-	1,146	1
Kennedy Library (035-0)	910	1	164	1	-	-	533	1	-	-	-	-	1,607	3
Mathematics and Science Bldg (038-0)	-	-	1,621	9	-	-	-	-	-	-	-	-	1,621	9
McPhee University Union (065-0)	-	-	1,740	11	473	2	21,945	10	210	2	-	-	24,368	25
Meat Processing Center (155-0)	-	-	-	-	-	-	119	2	-	-	-	-	119	2
Mt. Bishop Warehouse (050-J)	-	-	192	2	-	-	-	-	4,502	7	-	-	4,694	9
Mustang Substation (075-0)	-	-	-	-	-	-	-	-	1,211	1	-	-	1,211	1
Old Natatorium (046-0)	-	-	-	-	-	-	1,395	1	-	-	-	-	1,395	1
Performing Arts Center (006-0)	-	-	1,441	7	915	2	37,797	35	2,722	14	-	-	42,875	58
Pkg Structure #3 (271-0)	-	-	-	-	-	-	-	-	2,923	1	-	-	2,923	1
Pkg Structure #4 (371-0)	-	-	-	-	-	-	-	-	3,156	1	-	-	3,156	1
Sports Complex Maint Building (160-F)	-	-	-	-	-	-	-	-	1,553	1	-	-	1,553	1
Spanos Stadium East Bleachers (061-K)	-	-	-	-	-	-	-	-	2,717	3	-	-	2,717	3
Stadium West Bleachers (061-D)	-	-	-	-	-	-	310	1	-	-	-	-	310	1
Tapangos Building (034-B)	-	-	-	-	-	-	95	1	-	-	-	-	95	1
Technology Park Building (083-0)	-	-	18,709	13	-	-	311	1	-	-	-	-	19,020	14
Transportation Services Bldg (071-0)	-	-	521	3	-	-	-	-	7,063	9	-	-	7,584	12
Transportation Svc Paint Booth (071-A)	-	-	-	-	-	-	-	-	840	1	-	-	840	1
University Police Building (036-0)	-	-	5,493	26	2,004	3	647	4	1,149	4	-	-	9,293	37
Upper Fields Maintenance Shed (162-E)	-	-	-	-	-	-	-	-	599	1	-	-	599	1
Village Drive Central Plant (271-A)	-	-	-	-	-	-	-	-	796	1	-	-	796	1
Visitor Information Kiosk (134-0)	-	-	135	1	-	-	-	-	-	-	-	-	135	1
Welding Annex Building (058-A)	-	-	-	-	-	-	-	-	839	1	-	-	839	1
Welding Building (058-0)	-	-	3,490	16	-	-	-	-	3,498	7	-	-	6,988	23
Welding Storage 1 (058-B)	-	-	-	-	-	-	-	-	132	1	-	-	132	1
Welding Storage 2 (058-C)	-	-	-	-	-	-	-	-	530	2	-	-	530	2
yak?itvutvu Hall (172-H)	-	-	118	1	-	-	1,932	1	854	1	2,049	2	4,953	5
TOTAL	1,972	2	82,589	298	4,075	11	126,428	126	104,111	122	2,049	2	321,224	561